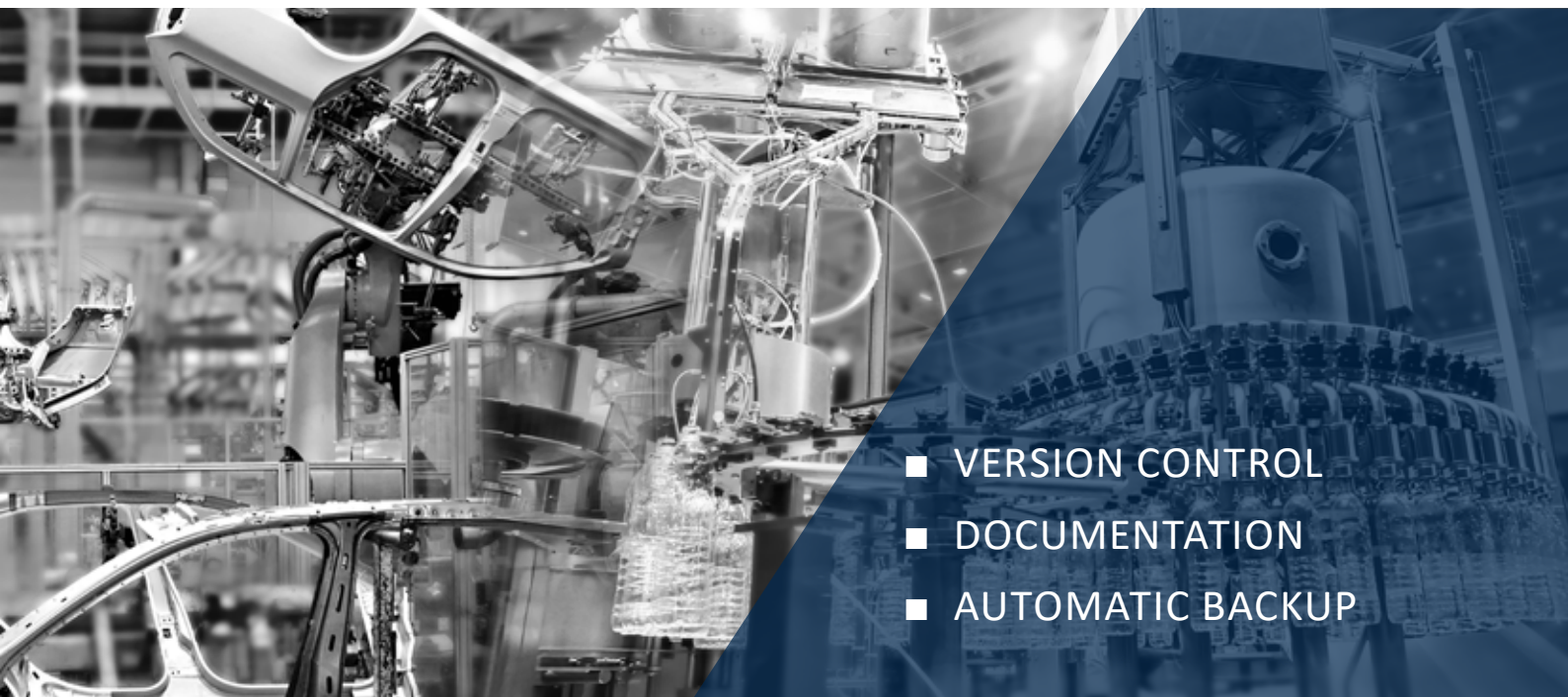


Data management for industrial automation

Ensure clarity, certainty, and security



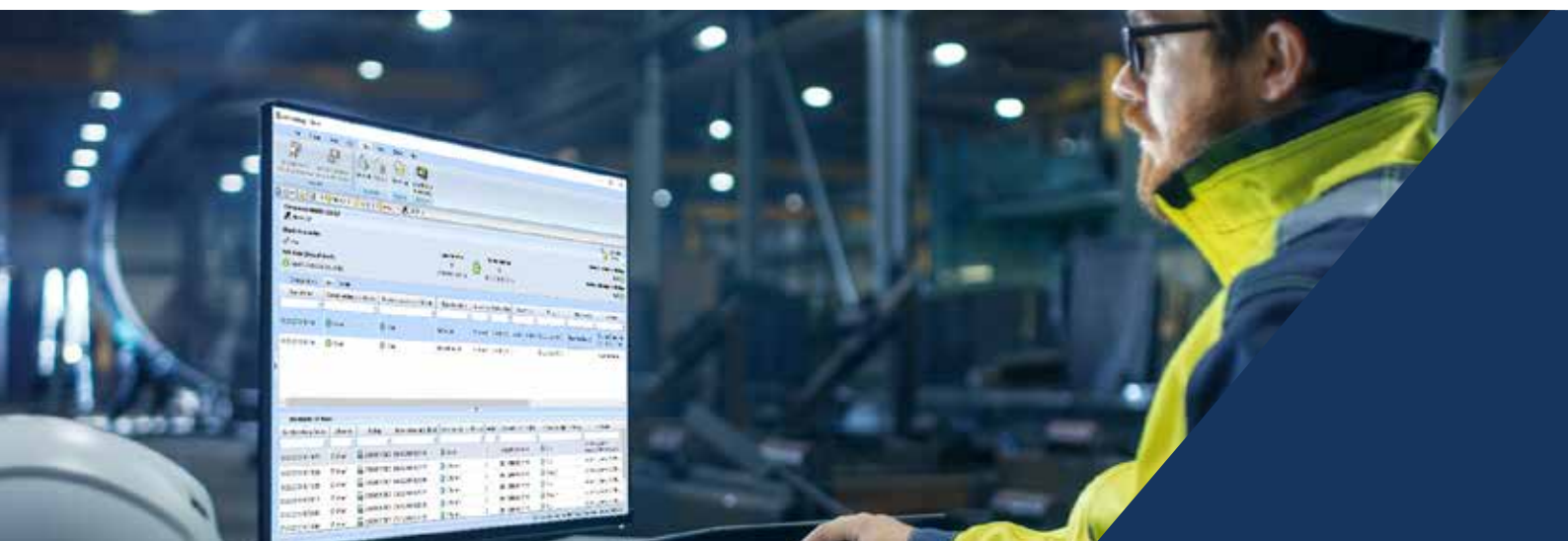
- VERSION CONTROL
- DOCUMENTATION
- AUTOMATIC BACKUP





THE CHALLENGES IN AUTOMATED PRODUCTION FACILITIES

- A large number of networked and non-networked devices and controllers need to be regularly backed up
- Continuity needs to be maintained across multiple shift changes
- Internal and external staff frequently make changes to device programs while troubleshooting and optimising software programs, or when commissioning and modifying production lines; these changes need to be traceable
- Manual changes to a wide variety of programmable devices need to be properly documented and made centrally available
- Setpoints and parameters need to be both continually monitored for changes and easily restorable



THE FUTURE OF MAINTENANCE



Your manufacturer-independent data management solution: versiondog!

AUVESY's versiondog software offers customers the solution they need. versiondog is designed to work with the full range of automation devices and equipment commonly in use today and is not

tied to any single manufacturer. As newer products become more established action is taken to ensure that the necessary comparators are made available to users.



VERSION CONTROL

- Standardised management of all changes to control programs
- Analysis and traceability of changes using graphical, tabular or text-based version comparisons
- Changes displayed clearly and comprehensibly
- Fast disaster recovery



DOCUMENTATION

- Integrated support for documentation
- Data organised with 100% clarity and transparency
- Clear presentation of complete change history
- Audit trail reports at the click of a button



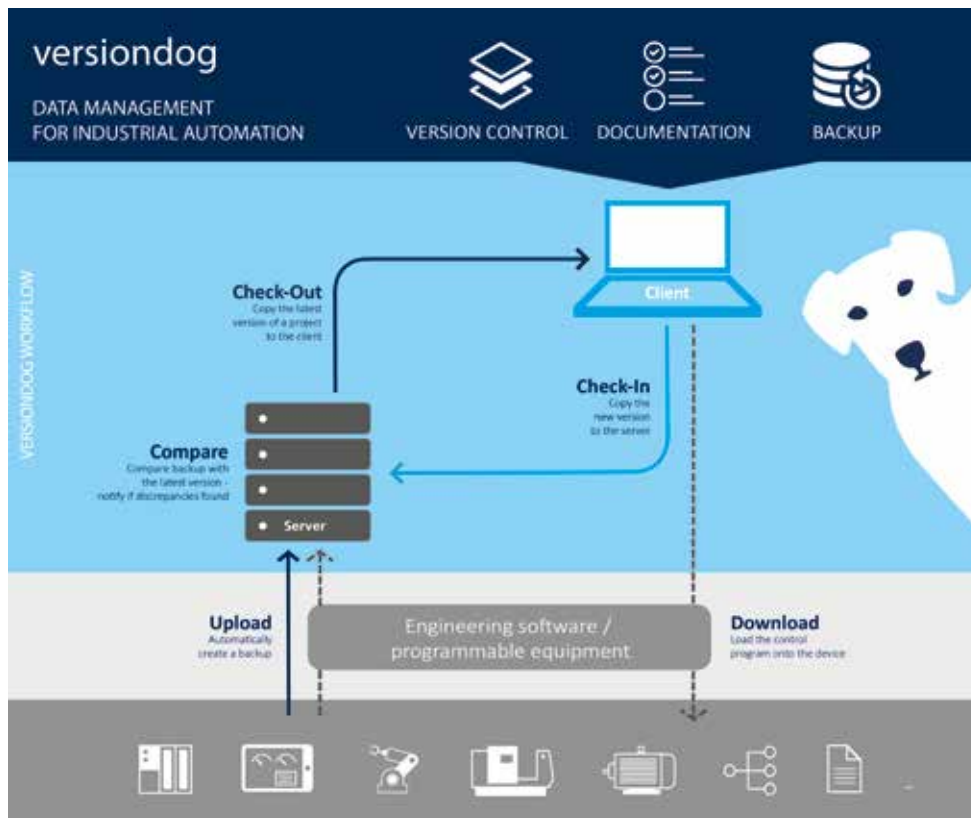
AUTOMATIC BACKUP

- Fully safeguarded data and significant time savings
- Regular automatic comparisons
- Alarm when discrepancies are found
- One backup strategy for networked and non-networked devices

AUTOMATED DATA MANAGEMENT

versiondog analyses the data and programs of many different automation manufacturers. Its automated functions help deal with the flood of data and versions in any production environment. versiondog not only manages data centrally, it also monitors and analyses changes in device software.

That includes changes made by external contractors. And synchronisation between versiondog servers at different sites enables the distribution and monitoring of company-wide standard programming elements.





Maintenance made easy

” The greatest benefit that versiondog has helped to bring about is the fact that the software has helped us to optimise our day-to-day work. Extended downtime, once caused by not being able to find the latest version of the program, no longer occurs.

Marvin Lindemann, maintenance coordinator at Knorr-Bremse SteeringSystems GmbH



© Knorr-Bremse SteeringSystems GmbH

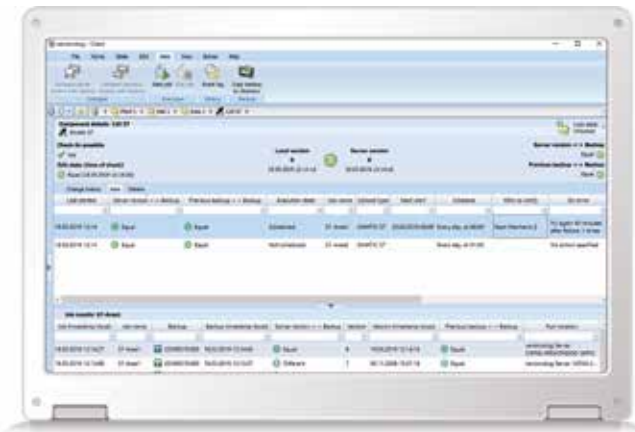
YOUR VERSIONDOG ADVANTAGE – MORE CERTAINTY, CLARITY AND SECURITY

- Identify unauthorised program changes immediately
- Generate change records quickly and easily (for audits, etc.)
- Quickly find the right data needed for disaster recovery
- Simplify coordination and management of external contractors
- Coordinate personnel through user and access management

AUTOMATIC BACKUP

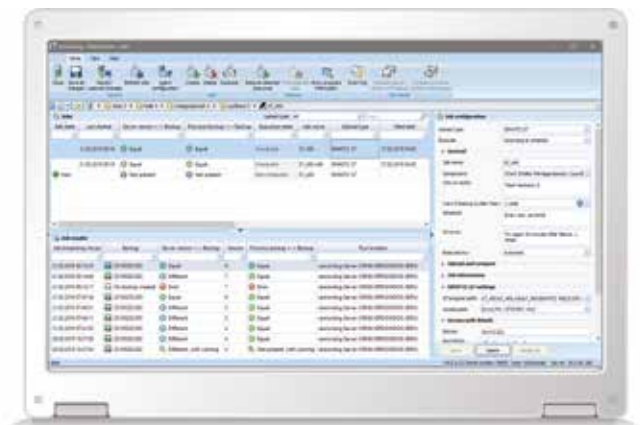
versiondog not only runs regular automated backups, it can even make detailed comparisons between the online program and the offline project. That means you can be certain that your automa-

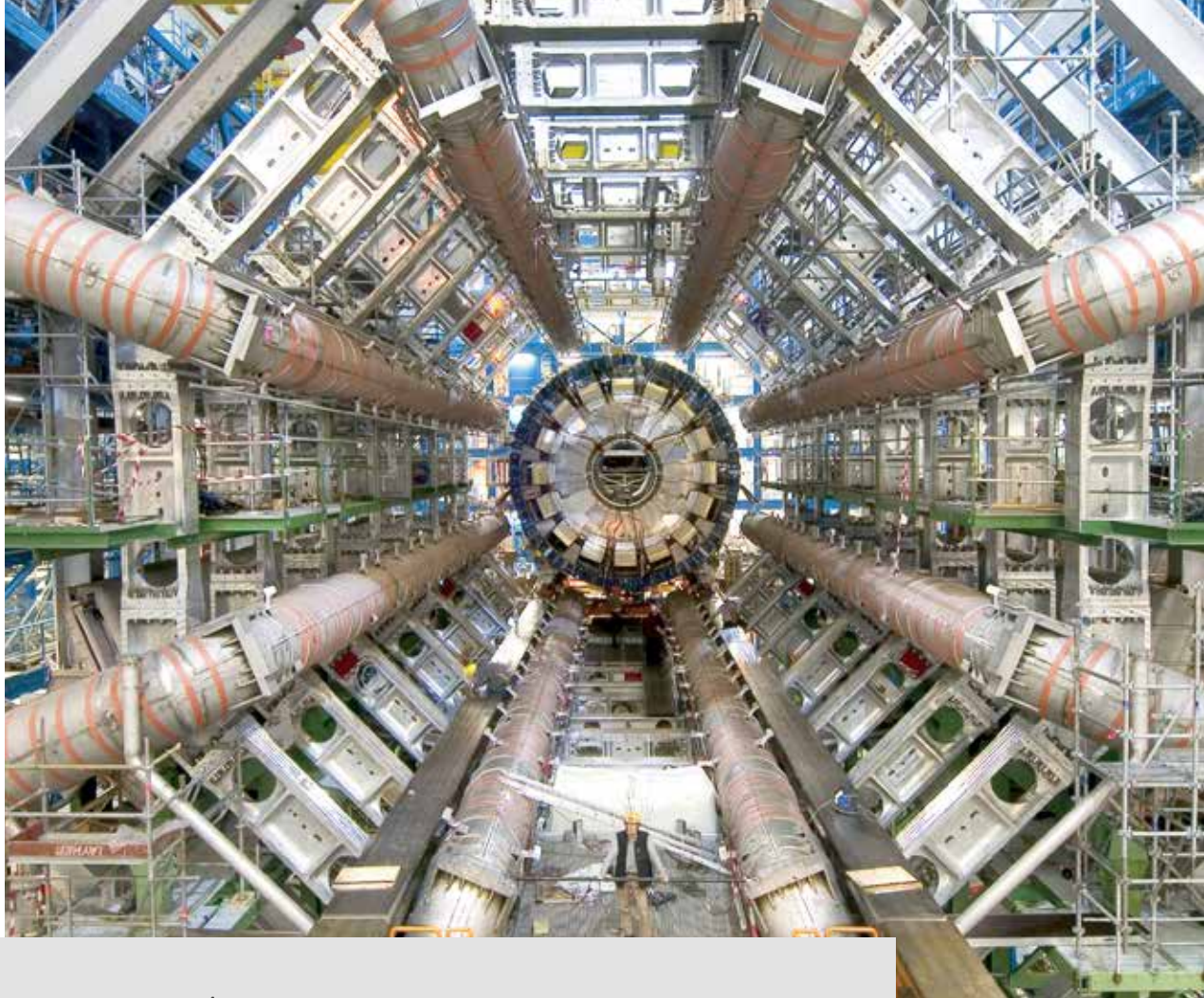
ted device programs are current and correct. You always know exactly what version is running in production, and setpoints and parameters can be checked and restored if necessary at any time.



A clearly presented complete change history means that you can see at a glance WHO changed WHAT, WHERE, WHEN, and WHY.

The versiondog job configuration function can be used for the purpose of monitoring and/or backup, which can be carried out manually or executed according to a schedule.





versiondog ensures certainty

” We have made significant gains in certainty and quality when it comes to data availability in areas where many programmable logic controllers are in use. Implementing versiondog has put us on a new quality level.

Jerónimo Ortolá Vidal, automation engineer at the Industrial Controls and Safety Systems Group at CERN

© CERN

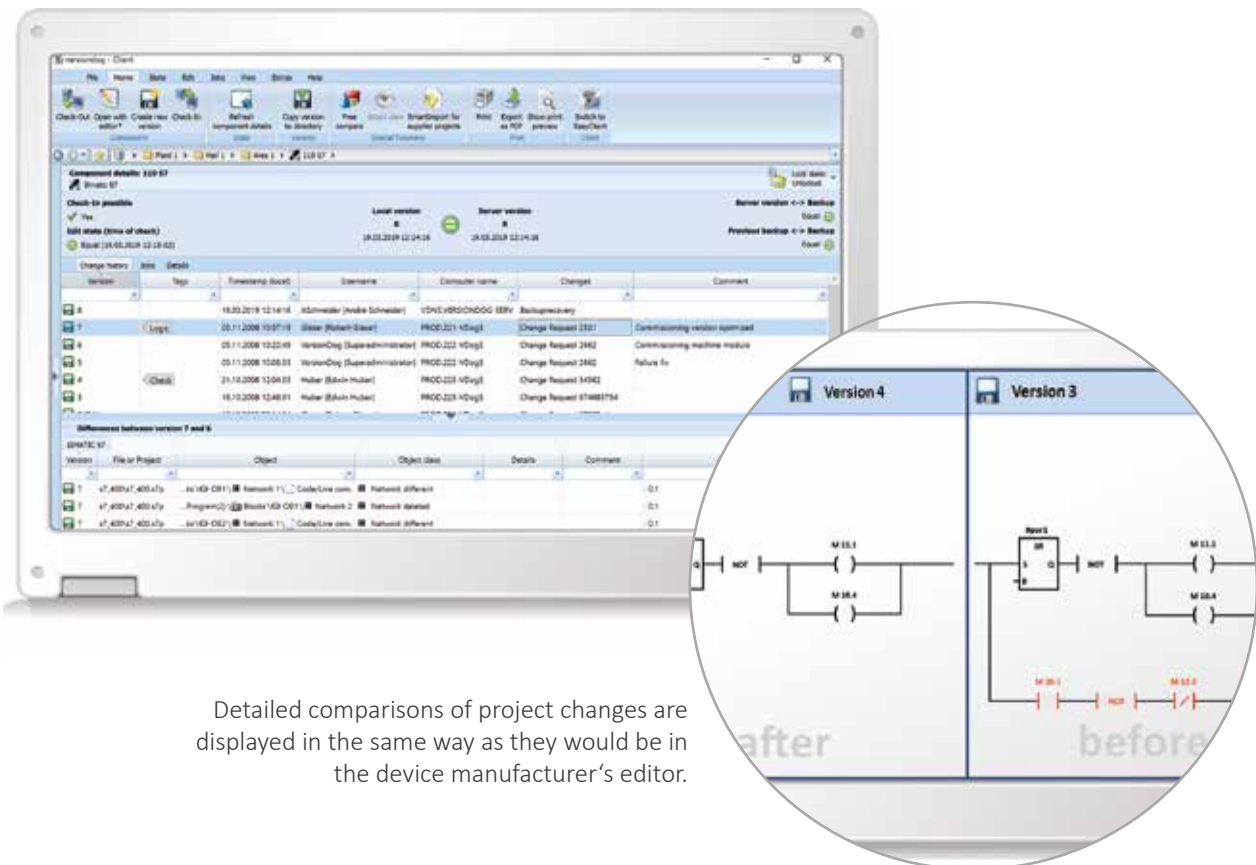
82%

of our customers agree that versiondog has helped them make significant quality gains at their production facilities!*

* Taken from the Q4/2018 customer survey

CHANGE MANAGEMENT: DETECT DIFFERENCES AND CREATE VERSIONS

With versiondog SmartCompare it only takes a few clicks to get a detailed comparison of any two versions, and an easy-to-understand analysis of differences. It can even display the results of a comparison graphically and in the same familiar way as the editor.



Detailed comparisons of project changes are displayed in the same way as they would be in the device manufacturer's editor.





Maintain clarity amidst the flood of data and program versions

” Thanks to versiondog, we are able to rapidly locate errors and get the plant back up and running again. The wonderful thing about versiondog is that fact that you know exactly when a particular change was made, who made it, and why it was made.

Dipl. Ing. Thomas Wenthaus works at the Warsteiner Brewery in the operative engineering department



© Warsteiner Brauerei

YOUR VERSIONDOG ADVANTAGE – QUALITY IMPROVEMENT

- Track all changes to programs and data in use in production and quickly comprehend the reasons for them (right back to the base version)
- Quickly find and restore an error-free version
- Smooth and optimise your daily workflow
- Reduce wastage by closely monitoring quality-relevant setpoints and parameters

PREDICTIVE MAINTENANCE WITH VERSIONDOG

The versiondog Factory Floor Status feature is our innovative solution that will help you keep on top of maintenance. The web-based add-on provides a comprehensive overview of devices, including MLFB overview, firmware versions, hardware

serial numbers, cycle times, battery status, backup results, and much more. The search function helps you to quickly perform analyses and compile reports.



In addition to a detailed overview of all devices and equipment that are integrated into the versiondog system, Factory Floor Status also includes a job statistics report which displays graphical analyses of the results of backup jobs. This makes it easier to keep track of KPIs.





STIHL significantly improves plant reliability with versiondog

” versiondog is a well-rounded tool that has helped us simplify our work immensely. Functions such as version compare are even better than the solutions offered by individual device manufacturers. That is what makes versiondog so attractive!

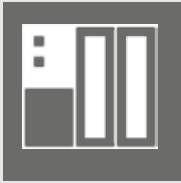
Thomas Ruppmann, department of electronic design at Andreas Stihl AG & Co. KG

STIHL®

© Andreas Stihl AG & Co. KG

YOUR VERSIONDOG ADVANTAGE – COST REDUCTION

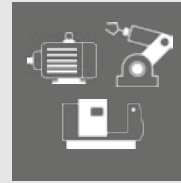
- Cut the duration of downtime or avoid it altogether
- Reduce lost production and wastage
- Improve efficiency when commissioning new production lines
- Save time with automated backups and documentation and by being able to spot errors quickly and easily



- B&R
- Beckhoff
- Bosch
- CODESYS
- FANUC
- GE
- Mitsubishi
- Phoenix Contact
- Rockwell
- Schneider Electric
- Siemens
- ...



- ABB
- COPA-DATA
- GE
- Rockwell Automation
- Schneider Electric
- Siemens
-



- ABB
- Cognex
- FANUC
- Heidenhain*
- Kistler
- KUKA
- Lenze
- Mitsubishi
- Motoman
- Schraubersteuerungen
- SEW
- SICK
- Siemens
-



- ASCII and INI files
- CSV files
- EPLAN*
- Images (Acronis, Drive Snapshot etc.)
- PDF files
- Word, Excel
- XML files
- .exe, .dll
- ...

* under development

Manufacturer-independent device support (versiondog 7.0)

OPTIMISED FOR YOUR AUTOMATION SYSTEMS AND DATA

Use a single strategy to safeguard all automation system project data and other data types. Track changes and compare versions in detail. Backup device data automatically. Perform disaster recovery faster and with confidence.

A helpful and knowledgeable in-house support team is there to give individual assistance with the details of integrating various different devices into

the system. Flexibility regarding further development and required features is also assured.

The AUVESY Academy is the best way to find out everything you need to know to make versiondog work for you in a way that optimally suits your requirements. Our qualified team of professional versiondog trainers will teach you step-by-step how to use it to its best advantage.





No more searching for software

” At Mann + Hummel, versiondog has now become such an important tool that the trainees now use it too. Education and a high level of knowledge are key factors in ensuring good maintenance.

Klaus Wanninger, responsible for electrical maintenance at Mann + Hummel

**MANN +
HUMMEL**

© Mann + Hummel Filterwerk GmbH

98 %

of customers have said that they would recommend versiondog!

* Taken from the Q4/2018 customer survey



Access from anywhere at anytime:

Find out more about the versiondog MobileApp for data management:
www.auvesy.com/mobile-app



DATA TRACEABILITY WITH VERSIONDOG – YOUR KEY TO IIOT

At the dawn of the Industrial Internet of Things, we are already seeing the beginnings of exponential increases in software complexity and data volume. Without a suitable automated data management system, companies are likely to be overwhelmed by developments. versiondog has for many years been helping manufacturers

minimise risk when making changes. You can always rollback if something goes wrong. There are many changes that will need to be made on the road to IIoT. Some large, some small. versiondog is ready to help you maximise benefit by minimising risk as you make the transformation.





IT security for critical infrastructure

” We want to connect every installation to the version-dog system, even those that are right next door. The installations are organised in a hierarchical structure, which is clearly reflected in the versiondog software. With staff numbers limited, this helps guarantee support at all sites and keep precise track of all changes.

Ralf Hellmann & Arnes Hadzic at Emschergenossenschaft/ Lippeverband



© Emschergenossenschaft/ Lippeverband

OUR CLIENT BASE SPEAKS FOR ITSELF:

Anglo American Platinum	ArcelorMittal	Audi	Bayer	Bitburger	BMW	
Bosch	Brose	Caterpillar	Coca-Cola	Continental	Copenhagen Airport	
CSL Behring	Daimler	Dürr	Ford	Fresenius	GlaxoSmithKline	
GM	Hamburger Hafen	Heineken	Kraft Foods	Mars	Munich Airport	Nestlé
Pirelli	Porsche	Procter & Gamble	Roche Diagnostics	Schaeffler	STIHL	Tetra Pak
ThyssenKrupp	Unilever	Volkswagen Group	Xellia Pharmaceuticals	ZF Friedrichshafen		

Find out more: www.auvesy.com

ABOUT AUVESY

AUVESY (AUtomed VErSioning SYStems) is the world's leading version control & data management system for automation. The company has grown steadily since it was founded in 2007 and it continues to go from strength to strength.

With a team of around 80 employees and 30 international sales partners, AUVESY looks after more than 700 customers from across the industrial spectrum and in more than 40 countries.

Over 900 versiondog software systems are currently in place helping customers to safeguard their data, simplify their data management and optimise their workflows.



GERMAN OFFICE

AUVESY GmbH
Fichtenstraße 38 B
76829 Landau in der Pfalz

P +49 6341 6810-300
F +49 6341 6810-311
E info@auvesy.de
Web www.auvesy.de



US OFFICE

AUVESY INC
146 Monroe Center St NW
Suite 1210
MI 49503 Grand Rapids

P +1-616.888.3770
F +1-616.888.3769
E info@auvesy.com
Web www.auvesy.us

AUVESY.